



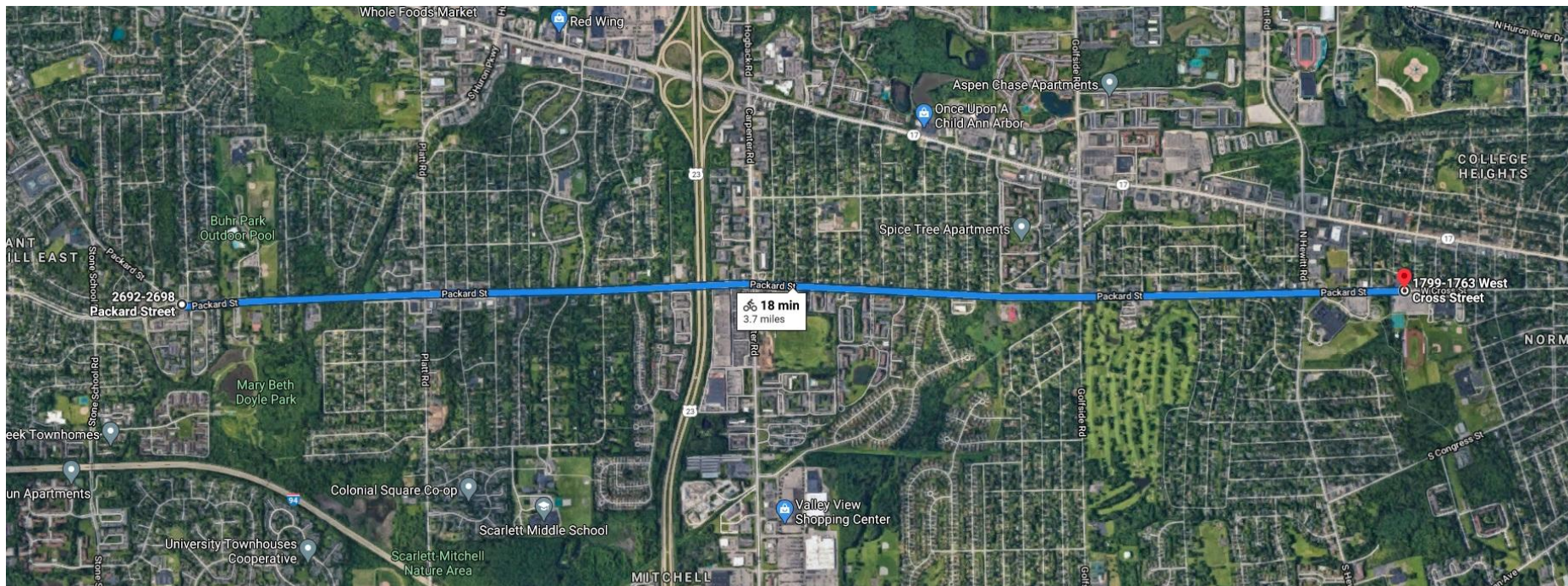
Packard Bikeway Task Force

Kickoff Meeting - Nov. 16, 2020



Brief Stats

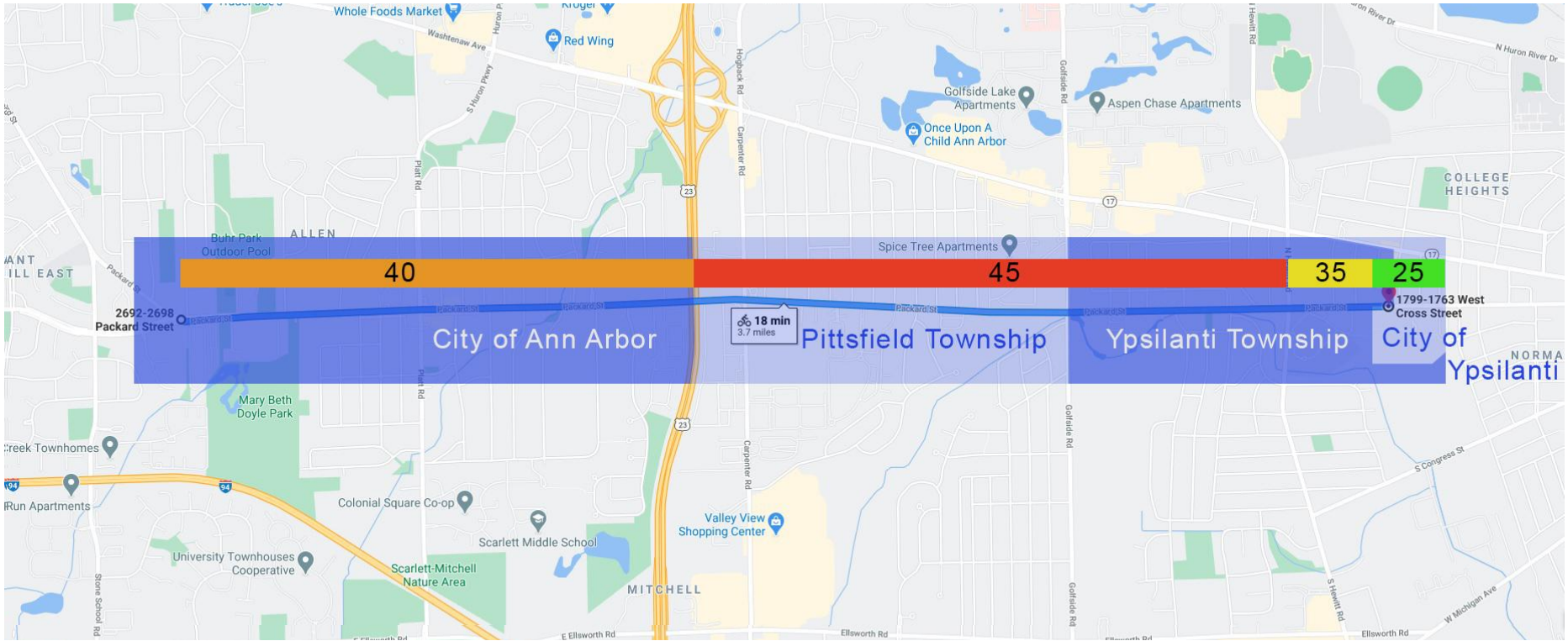
- Just under 4 miles of roadway, predominantly 5 lanes
- 5 major intersections
- North side - 36 minor intersections, ± 70 driveways
- South side - 25 minor intersections, ± 39 driveways



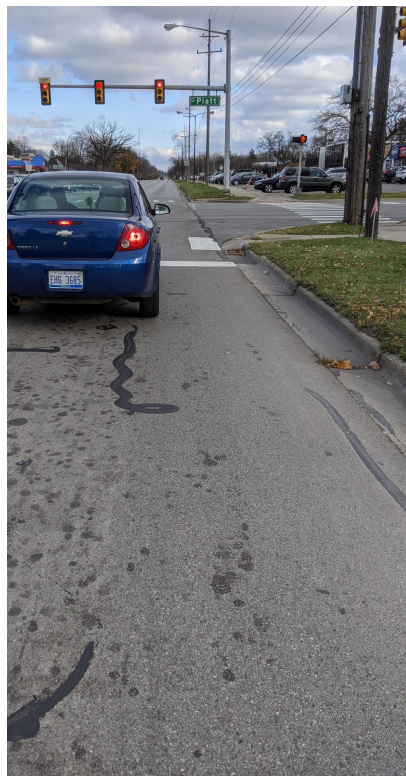
The map displays the proposed light rail route in blue, starting from the west and passing through the City of Ann Arbor, Pittsfield Township, Ypsilanti Township, and the City of Ypsilanti. The route is labeled with a callout indicating a segment of 18 minutes and 3.7 miles. Key locations and landmarks shown include Packard Street, Mary Beth Doyle Park, Valley View Shopping Center, and various apartment complexes like Aspen Chase Apartments and Spice Tree Apartments. The map also shows major roads like Washtenaw Ave, S Huron Pkwy, and E Ellsworth Rd, as well as green spaces like the Scarlett-Mitchell Nature Area.

The map illustrates the proposed M-100 corridor, highlighted in blue, extending from Packard Street in the City of Ann Arbor to West Cross Street in the City of Ypsilanti. The route passes through Pittsfield Township and Ypsilanti Township. A blue circle marks the MDOT location at the intersection of the corridor and I-275. A callout box indicates a 18 min, 3.7 miles bike ride from the MDOT location to the end of the corridor at West Cross Street. Various landmarks, parks, and schools are labeled on the map.

Existing Speed Limits



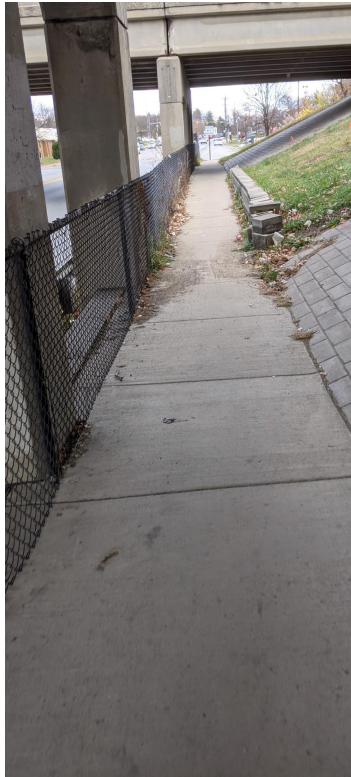
Eisenhower to Platt to...





to

Carpenter...

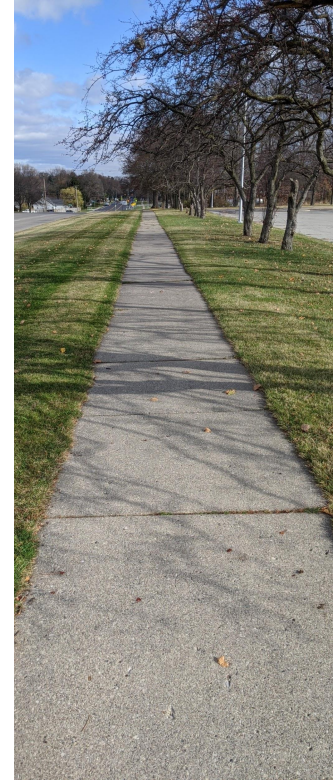


...to

Golfside

to

Hewitt...



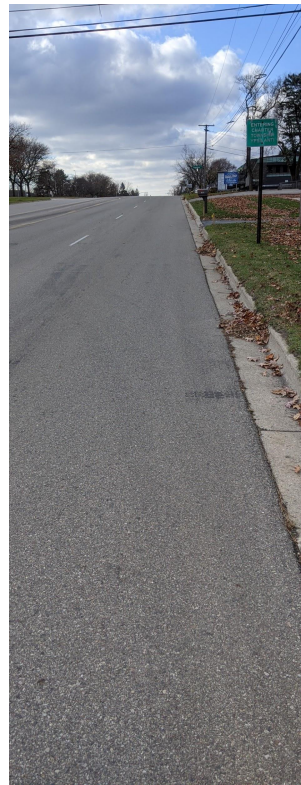
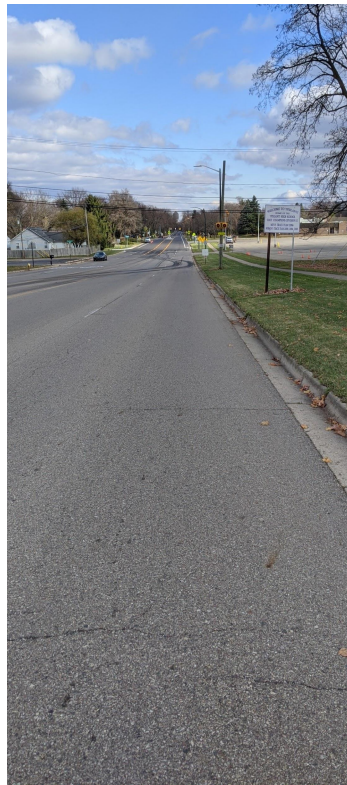
...to

Cross

and

back

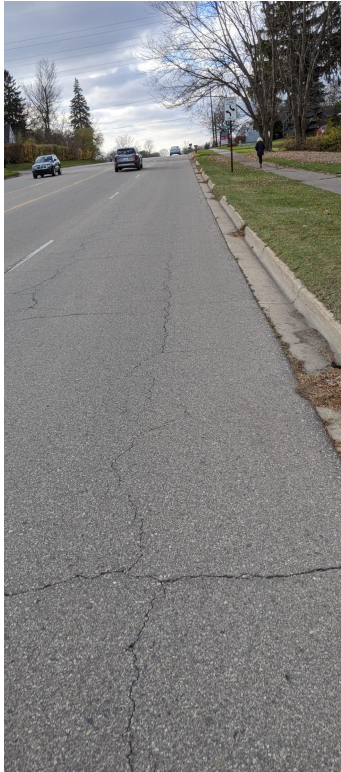
to...



...Hewitt

to

Golfside...

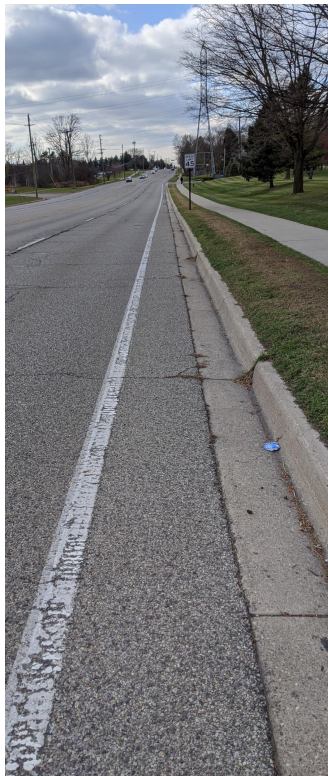


...to

Carpenter

to

23...



...to

Platt

to

Eisenhower.

